



Presentation  
will begin at  
5:35 p.m.



U.S. Department of Transportation  
Federal Highway Administration



# US14-US14 Bypass Corridor Study

Public Information Meeting #2  
November 25 and 26, 2019



# Housekeeping Items

- Please sign-in
- Comment card and handout
- Study website: [www.us14-14bcorridor.com](http://www.us14-14bcorridor.com)
- Meeting format
  - Introductory presentation
  - Open house
- Methods to provide feedback
  - Comment cards
  - Study website
  - Study contact (email, phone, mail)

A screenshot of the website's contact form. It features a dark blue navigation bar at the top with the same menu as the homepage. Below the navigation bar is a light blue section with the word 'Contact' in blue. Underneath is the text 'USE THE COMMENT FORM BELOW OR CONTACT PROJECT MANAGEMENT WITH QUESTIONS'. The form itself is white and contains several input fields: 'First Name', 'Last Name', 'Email Address', and 'Phone Number'. Below these is a larger text area labeled 'Your comment'. At the bottom of the form is a red 'SUBMIT' button and a note: 'Enter an email or phone above if you'd like to be contacted'.

# Purpose of Today's Meeting

1. Provide an overview of the study
2. Present preliminary concepts for feedback

*No recommendations have been made at this point in the study.*

## Examples of feedback we looking for:

- *Is there something we didn't address?*
- *What do you like or not like with a specific concept?*
- *What would you add or remove from a concept to make it better?*

# Study Team

- Study Contacts

Jon Wiegand

Consultant (HDR) Project Manager

Steve Gramm

SDDOT Project Manager

- Study Advisory Team



U.S. Department of Transportation  
**Federal Highway Administration**

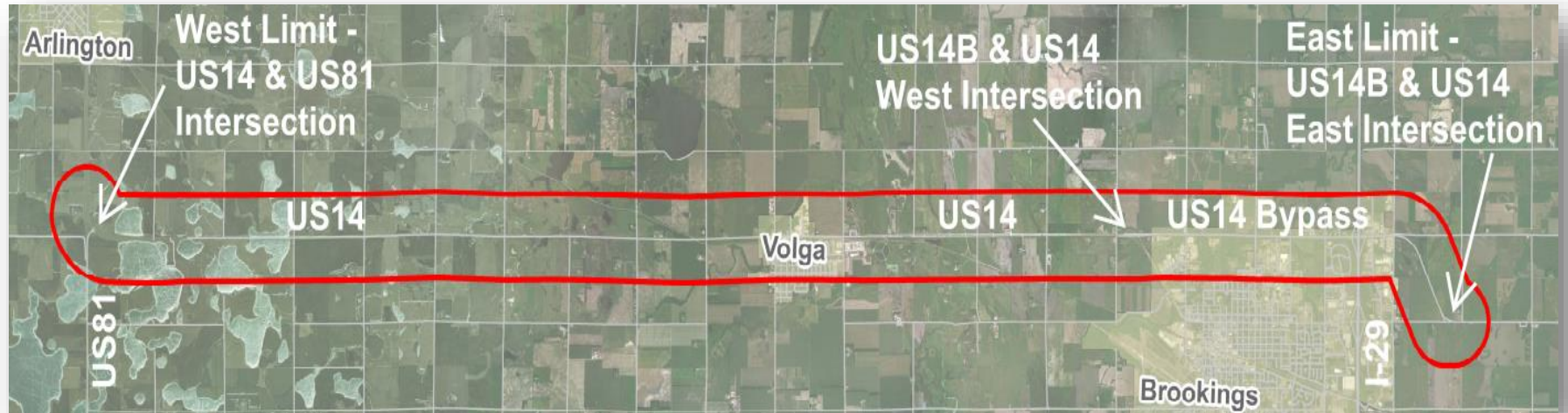


- Study Consultant



# Study Area

- US14
- US14 Bypass
- Does not include US14/6<sup>th</sup> Street through Brookings



# Study Goals

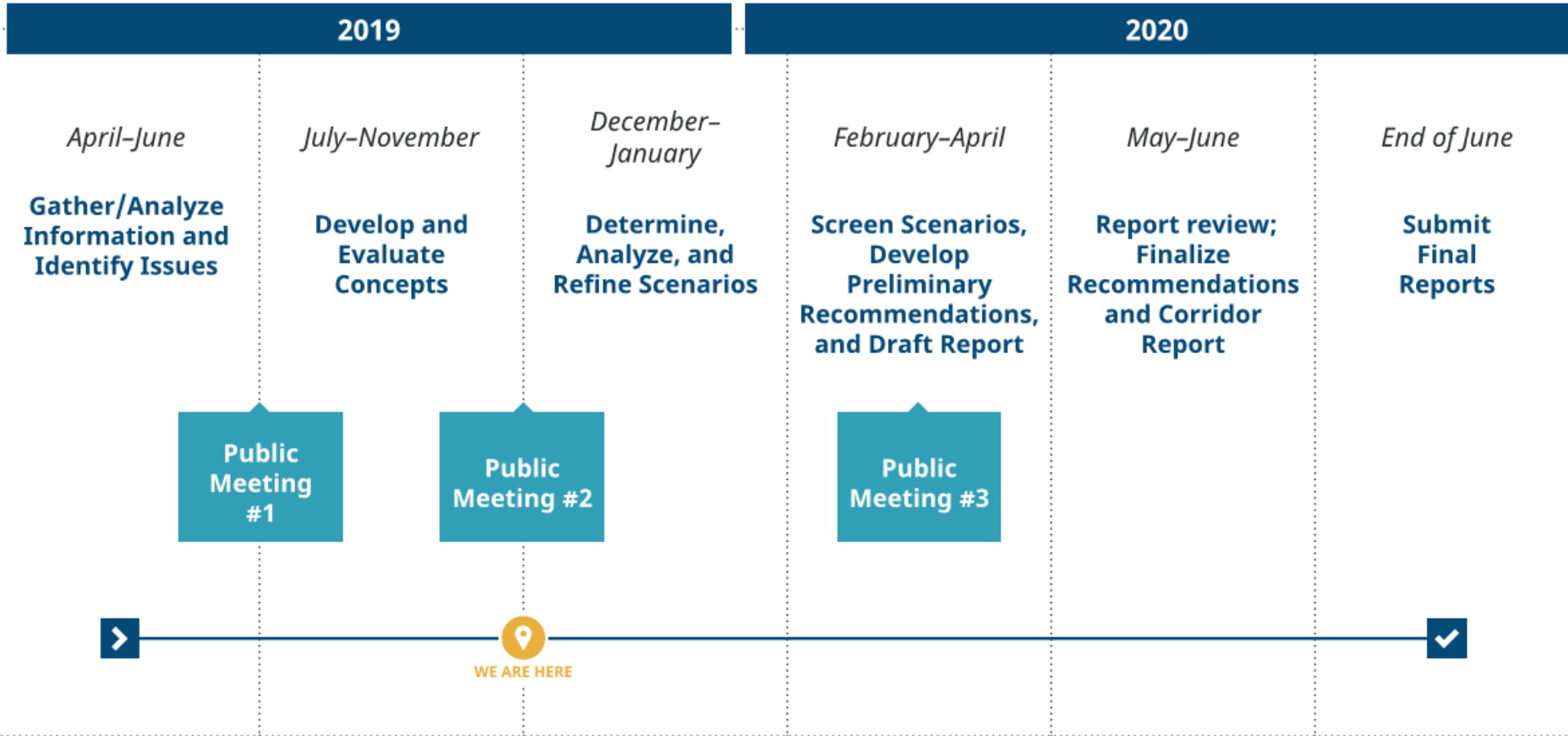
## Develop a long-range plan for the US14-US14 Bypass corridor.

- What improvements are needed over the next 20-30 years?
- What is the timeline for those improvements?
- Develop a plan for implementation.

## Key components of the plan

- US14 Bypass and 22<sup>nd</sup> Avenue intersection – *first project planned in FY 2024*
- I-29 and US14 Bypass interchange
- Corridor number of lanes and access (passing lanes, intersection turn lanes, etc.)
- Environmental overview

# Study Process and Schedule



# Preliminary Concepts Overview

1. US14 Bypass
  1. Corridor typical section concepts (number of lanes)
  2. Intersection concepts
  3. Interchange concepts
2. US14/US14B (west) intersection
3. US14/US14B (east) intersection
4. US14 in Volga
5. US14 west of Volga
6. Other areas and concepts

*Presentation does not include all concepts developed for this study! Please refer to concept boards and study website for full compilation of concepts.*

# US14 Bypass – Typical Section (Number of Lanes)

## Identified Needs to Address

- Traffic operations
  - Daily traffic
  - Event traffic
  - Seasonal traffic
  - Truck traffic
- Traffic growth and future development
- Mix of 'bypass' traffic and 'local' traffic
- Changing traffic patterns
- Intersection safety
- Reliability – 'bypass' route purpose
- Narrow interchange bridge and sight distance

# US14 Bypass – Typical Section (Number of Lanes)

## 3-lane with continuous center left-turn lane

- *Existing US14 Bypass*

## 4-lane divided (with median)

- *SD38 / 60<sup>th</sup> Street in NW Sioux Falls*



## 5-lane with continuous center left-turn lane

- *Similar to existing through Medary Ave*

- *All include potential shared-use path*
- *Speeds: 45-55 mph applicable*
- *May be applied singularly or in combination on US14 Bypass*



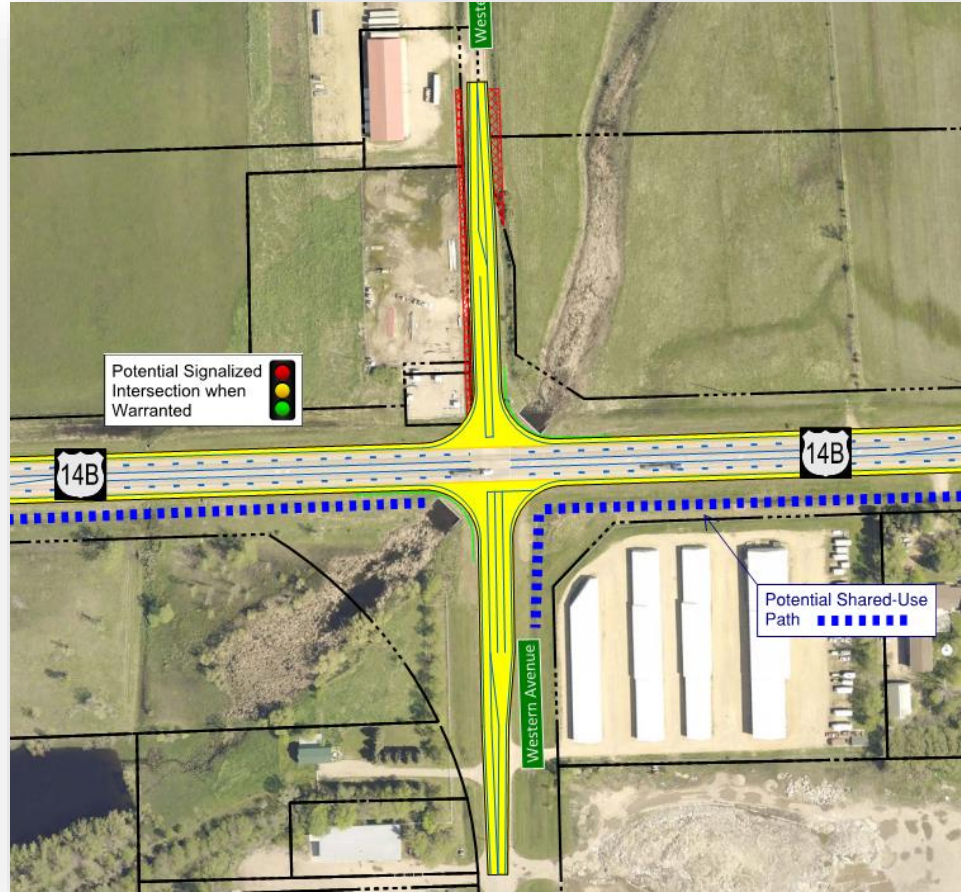
# US14 Bypass – Western Avenue

## Identified Needs to Address

- Traffic operations and safety
- Future development north of Brookings

## Concept Summary

- Add turn lanes as needed



# US14 Bypass – Medary Avenue

## Identified Needs to Address

- Traffic operations and safety
  - Daily traffic
  - Event traffic management

## Concept Summary

- Maintain current infrastructure
- Add turn lanes as needed



# US14 Bypass – Stadium Road and Jackrabbit Avenue

## Needs to address

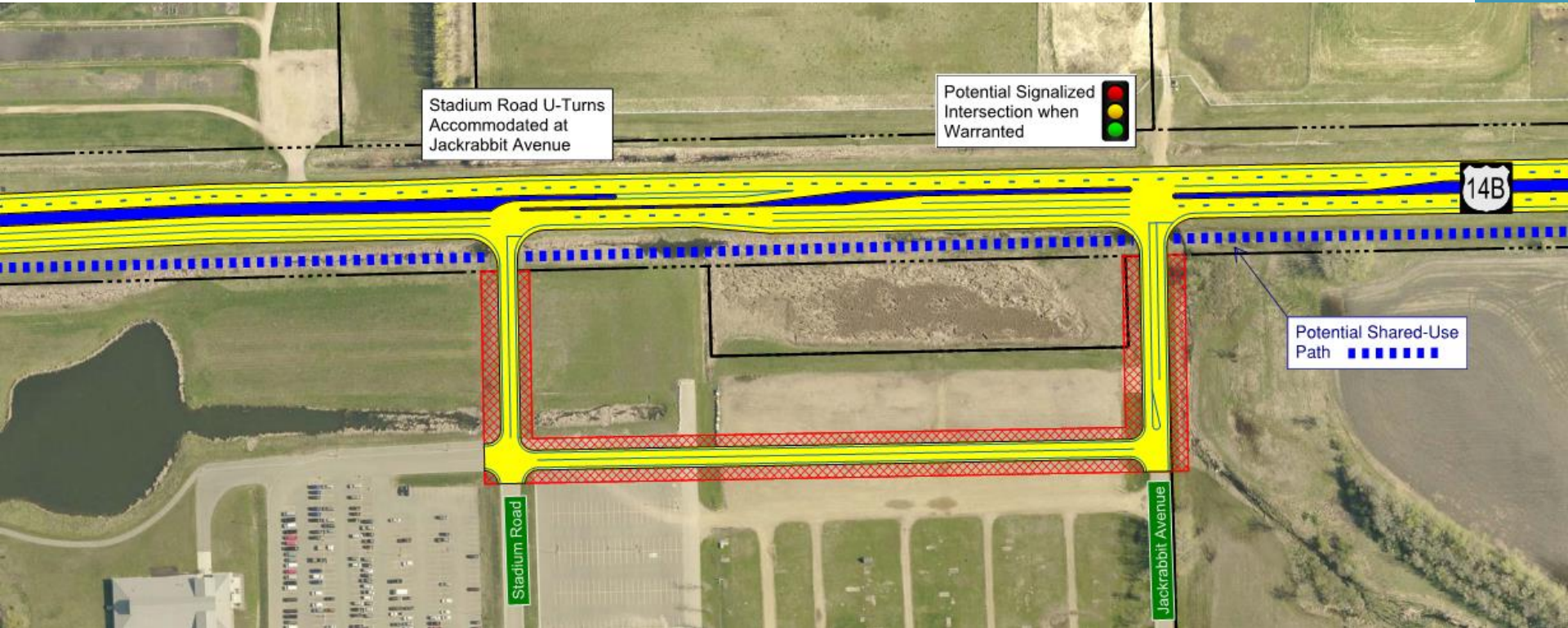
- Traffic operations and safety
  - Event traffic management

## Concept Features

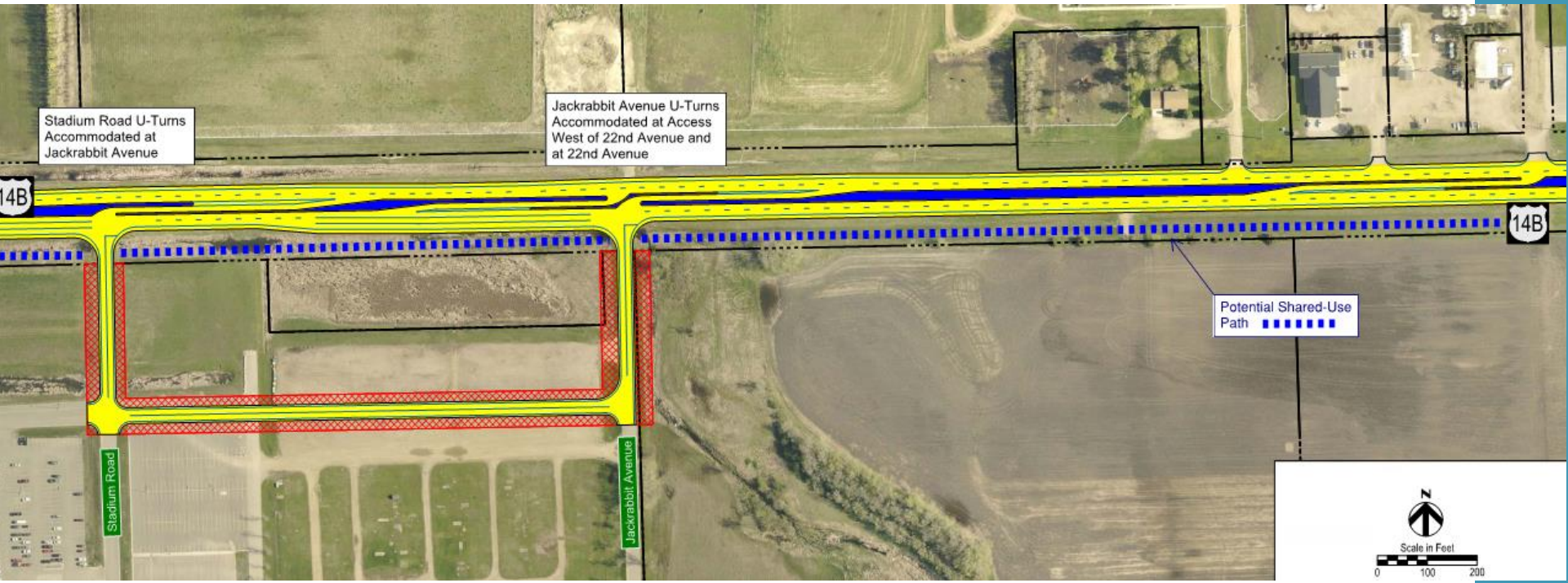
- Build-out of intersections with mix of intersection access treatments



# US14 Bypass – Stadium Road and Jackrabbit Avenue

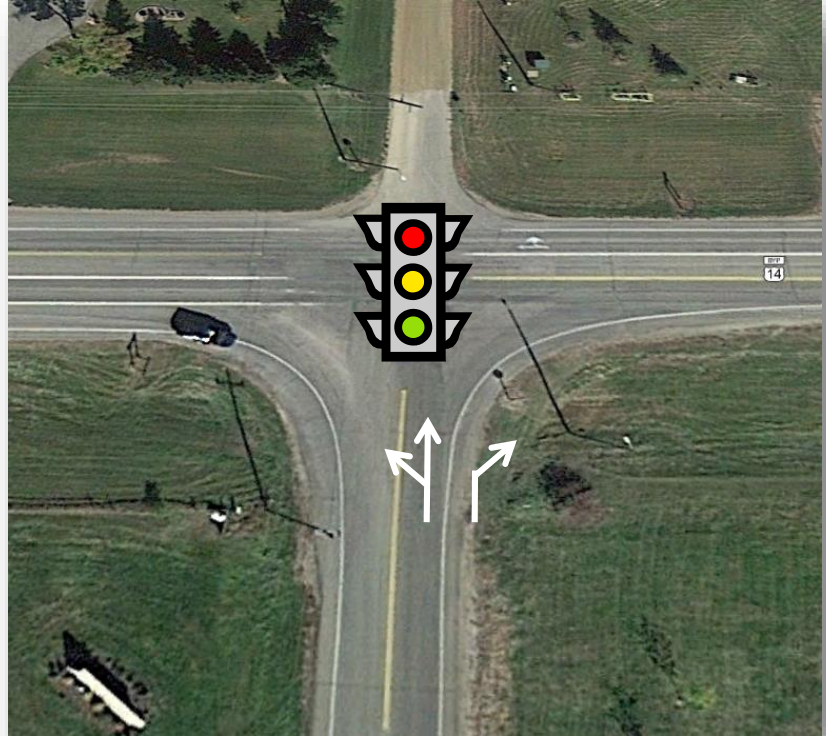


# US14 Bypass – Stadium Road and Jackrabbit Avenue



# Short-Term 22<sup>nd</sup> Avenue Intersection Project

- Traffic signal and northbound right-turn lane
- Planned as part of 2020 6<sup>th</sup> Street project



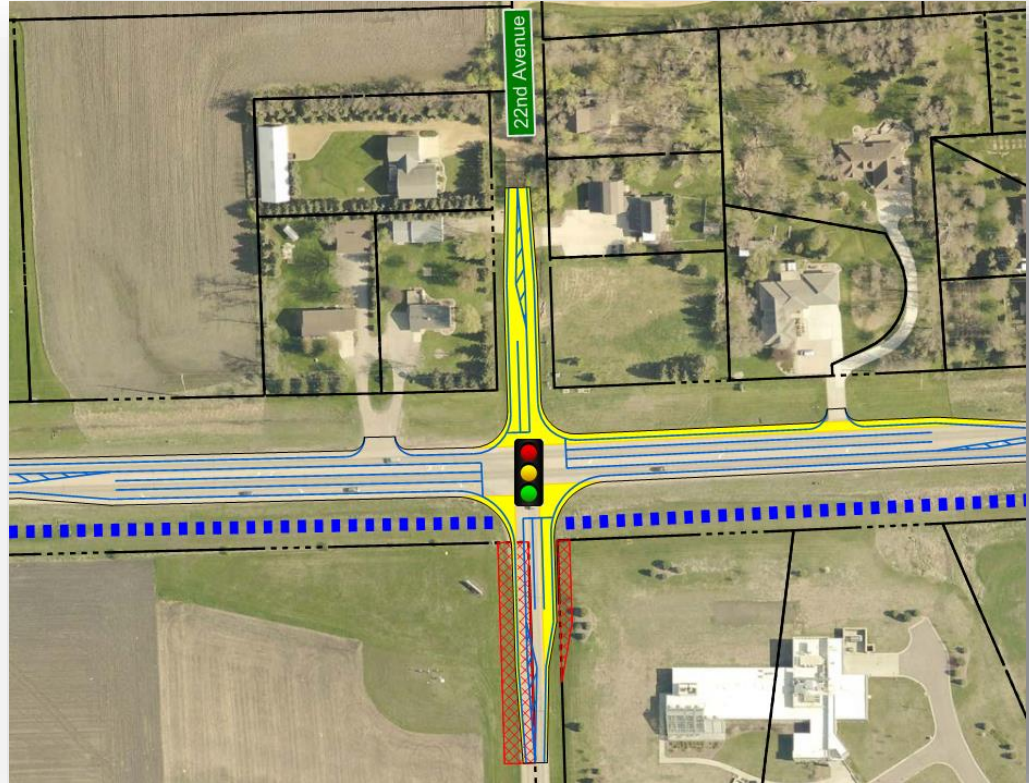
# US14 Bypass – 22<sup>nd</sup> Avenue

## Needs to Address

- Traffic operations and safety
  - Daily traffic
  - Event traffic management
- Access w/in functional area of intersection

## Concept Summary

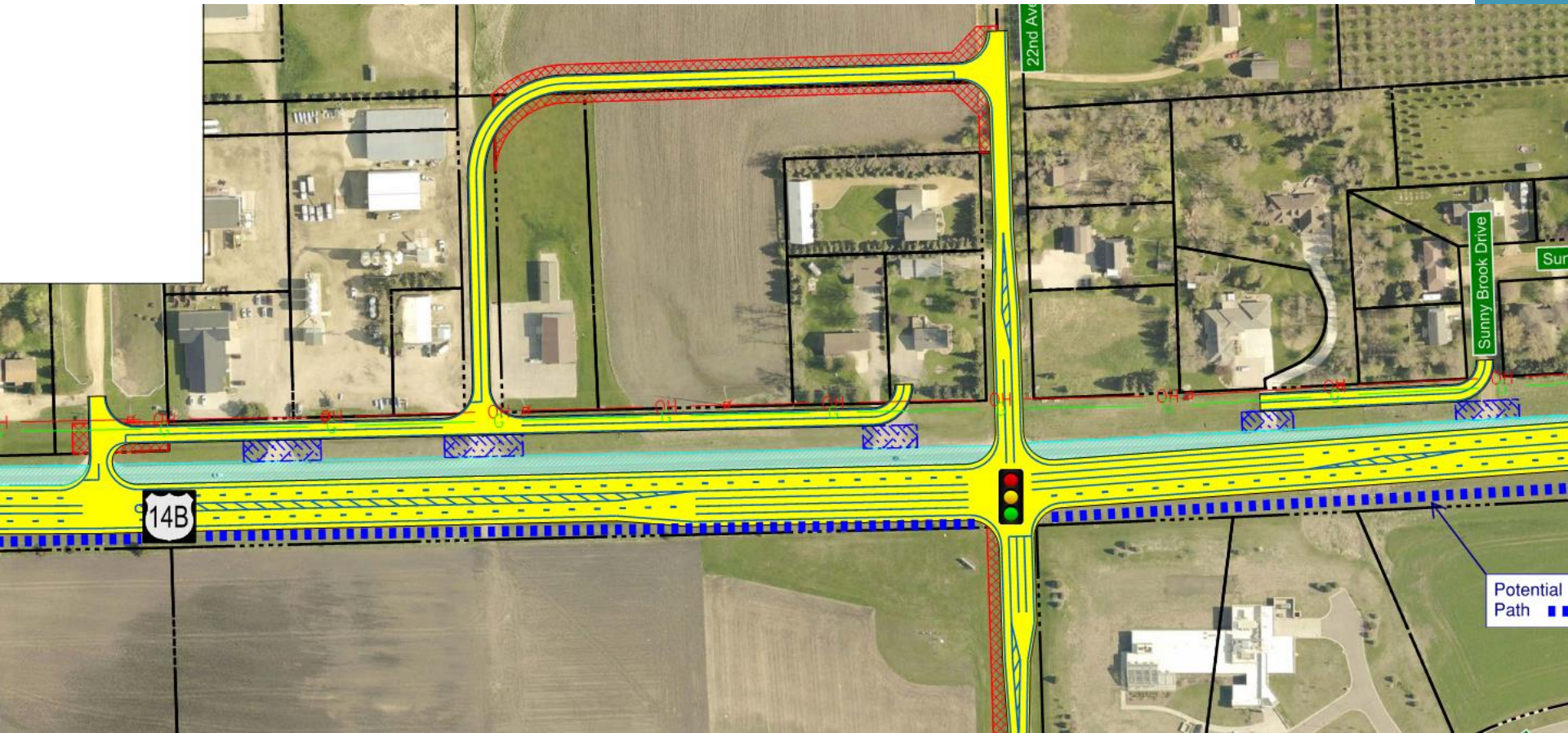
- Build-out intersection
- Varying degrees of access management



# US14 Bypass – 22<sup>nd</sup> Avenue



# US14 Bypass – 22nd Avenue



# US14 Bypass – I-29 Interchange

## Needs to Address

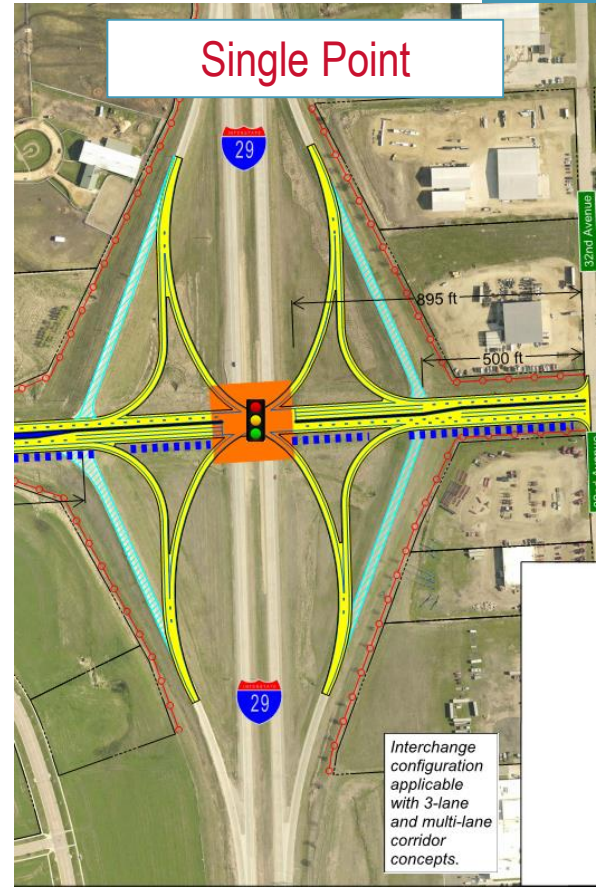
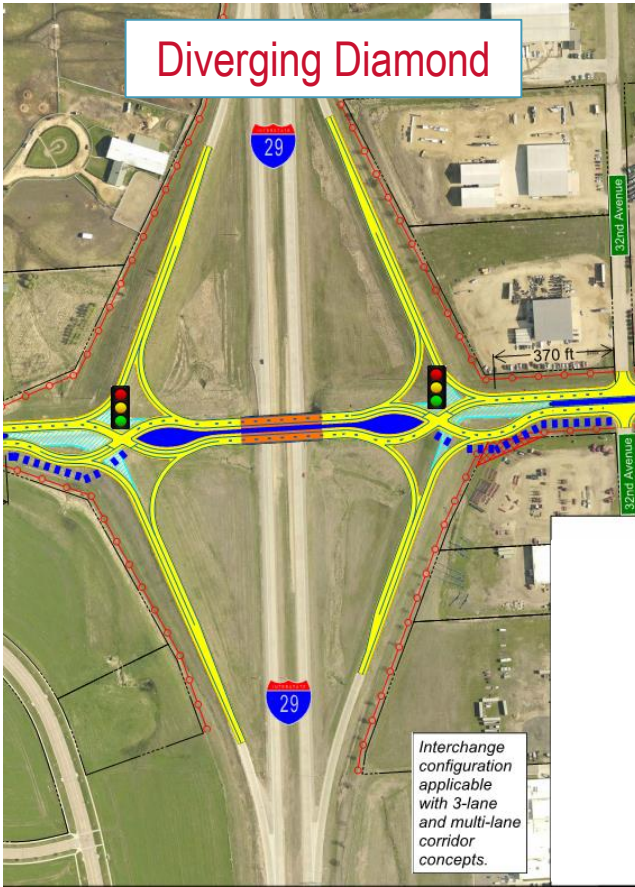
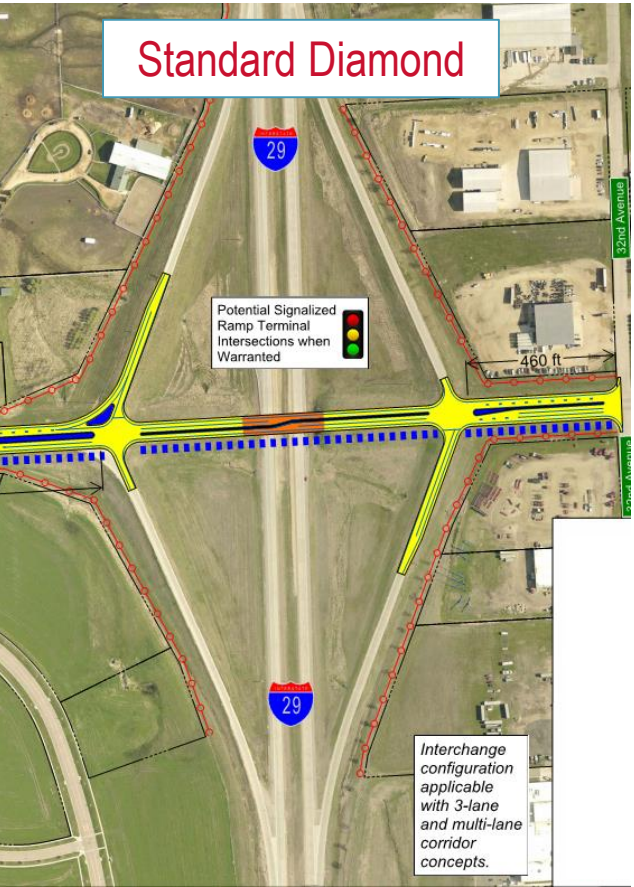
- Traffic operations and safety
- Structure width
- 460' between interchange intersection and 32<sup>nd</sup> Ave intersection

## Concept Summary

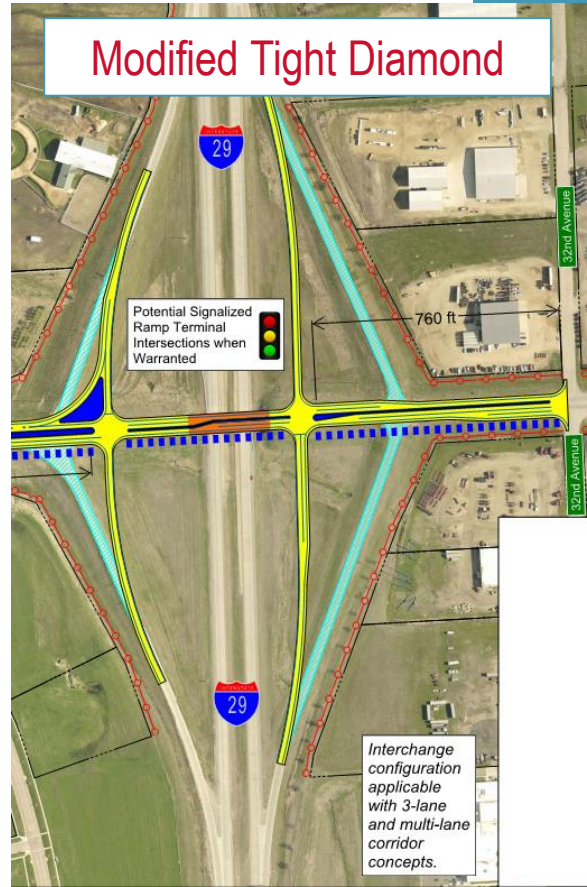
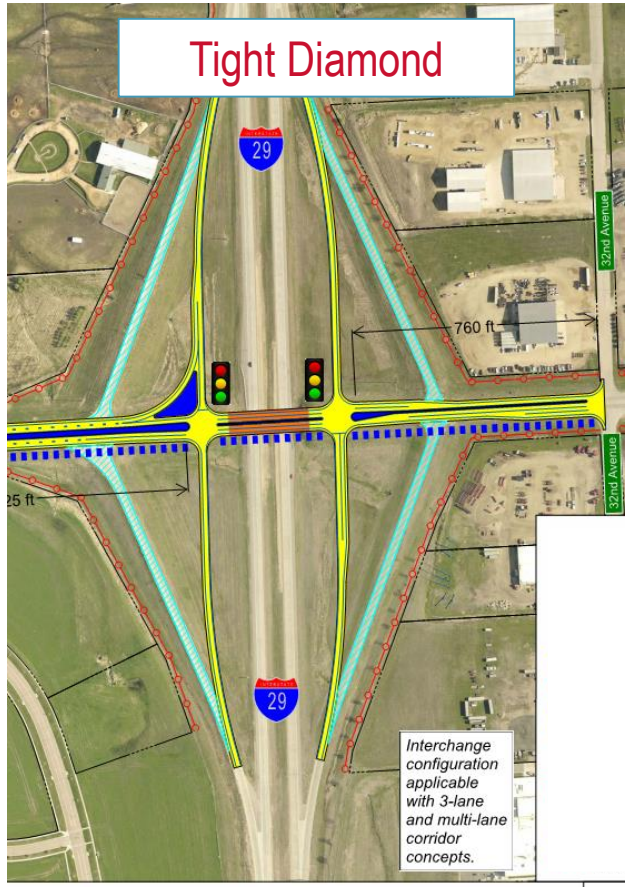
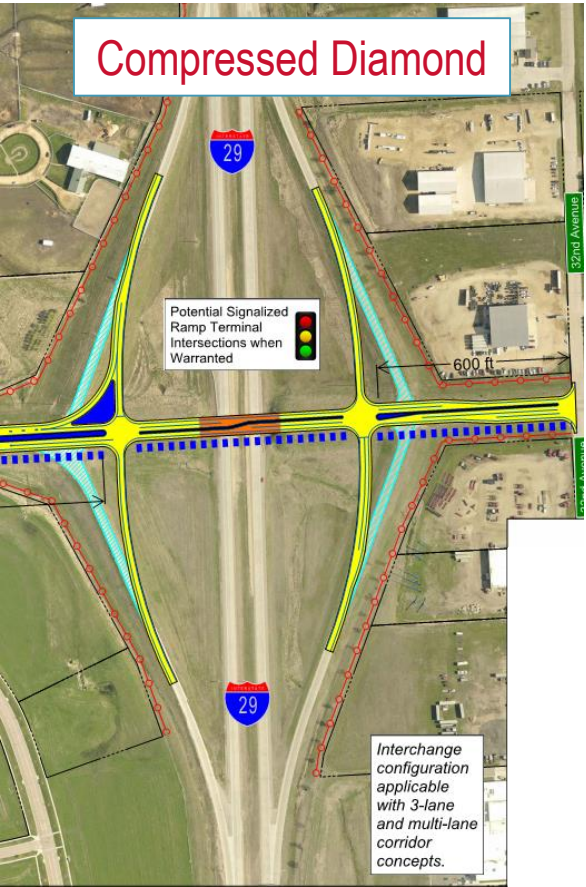
- Various interchange configurations



# US14 Bypass – I-29 Interchange



# US14 Bypass – I-29 Interchange



# US14 Bypass – 32<sup>nd</sup> Avenue and 34<sup>th</sup> Avenue

## Needs to Address

- Different traffic needs than west of I-29
- 460' between interchange intersection and 32<sup>nd</sup> Ave intersection
- Access management

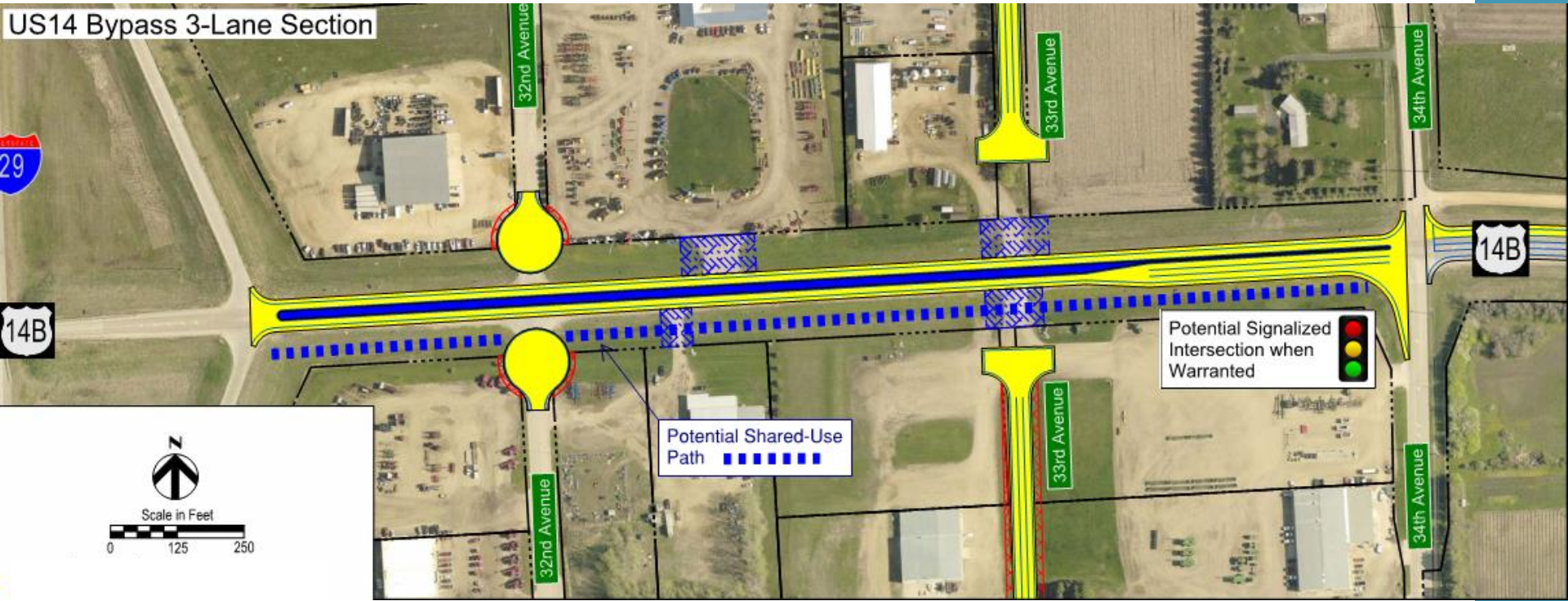
## Concept Summary

- Various intersection and local access configurations



# US14 Bypass – 32<sup>nd</sup> Avenue and 34<sup>th</sup> Avenue

US14 Bypass 3-Lane Section



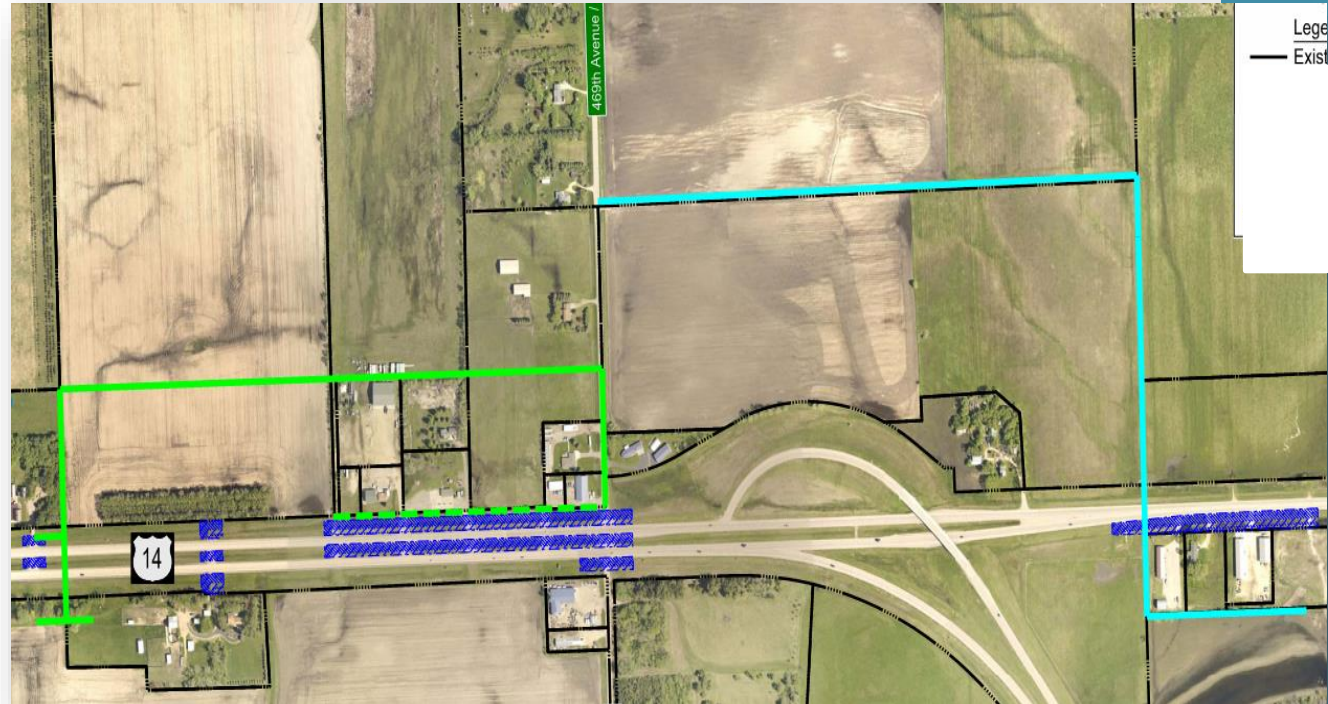
# US14/US14 Bypass (west) Interchange

## Needs to Address

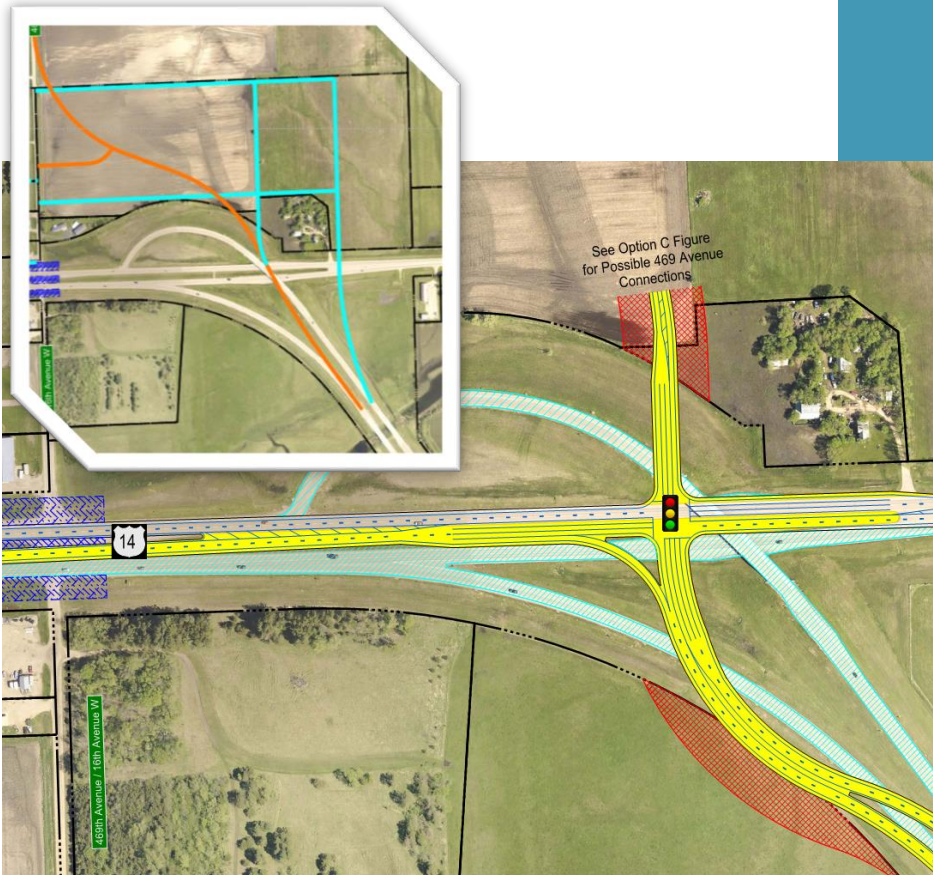
- Structure age (built 1970)
- Doesn't facilitate all movements
- Future Brookings north
- Desire to tie in 469<sup>th</sup> Ave
- Traffic operations and safety

## Concept Summary

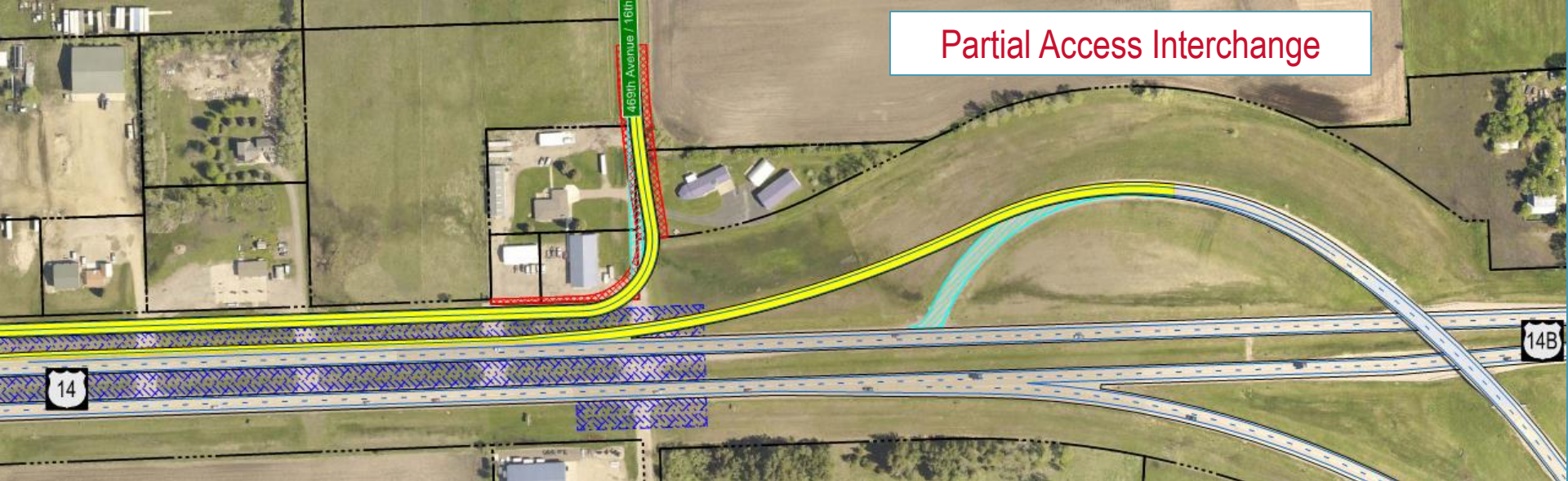
- Access management
- Intersection concepts
- Interchange concepts
- 469<sup>th</sup> Avenue connectivity



# US14/US14B (west) Interchange – Intersection Concepts



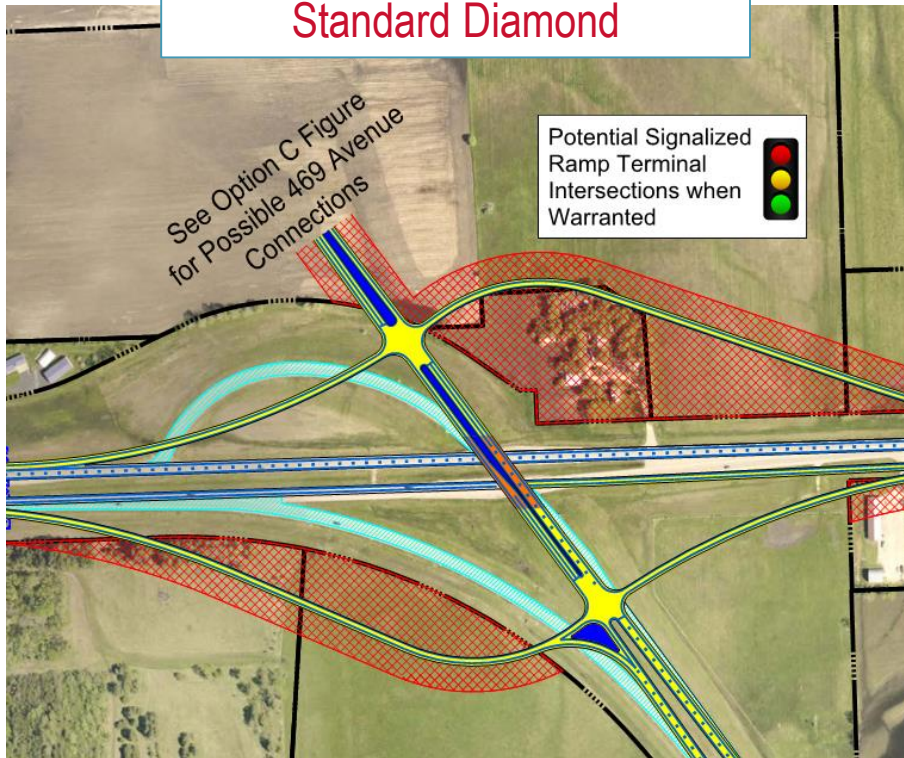
# US14/US14B (west) Interchange – Interchange Concepts



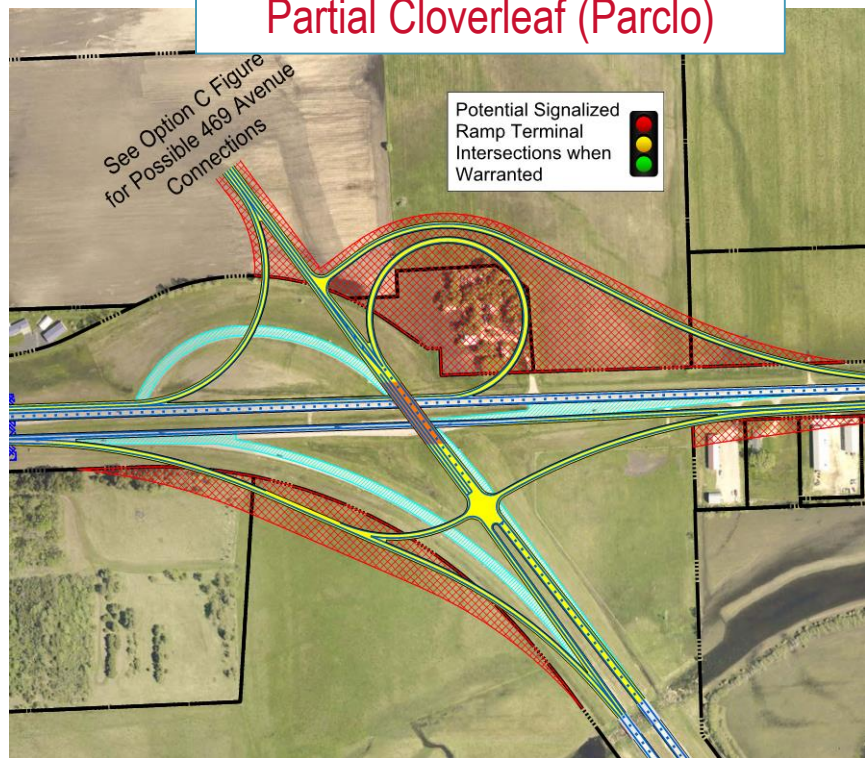
Partial Access Interchange

# US14/US14B (west) Interchange – Interchange Concepts

Standard Diamond



Partial Cloverleaf (Parclo)



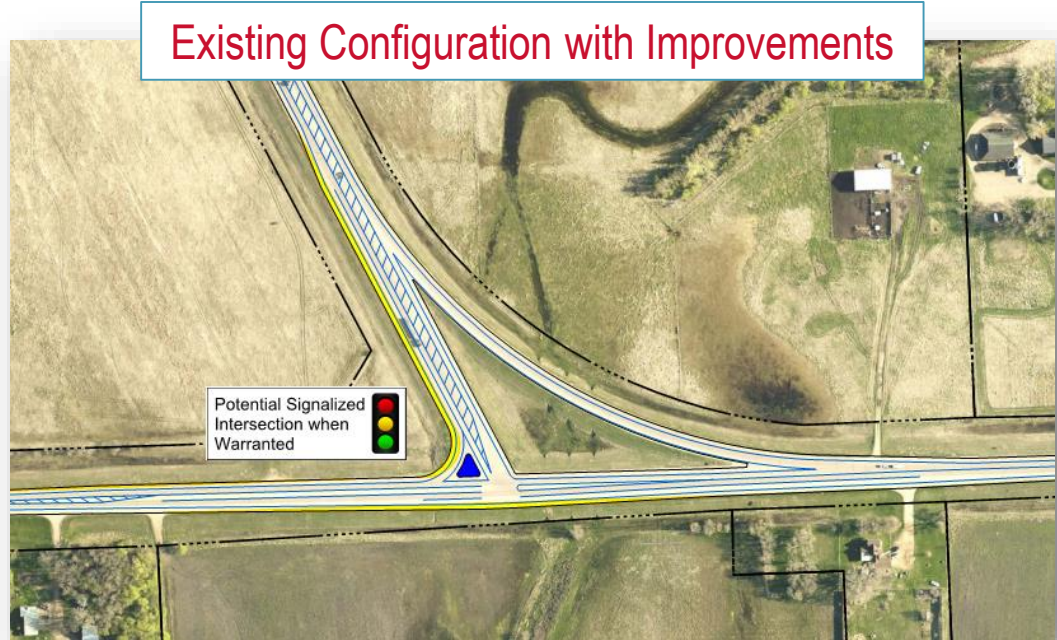
# US14/US14 Bypass (east) Intersection Concepts

## Needs to Address

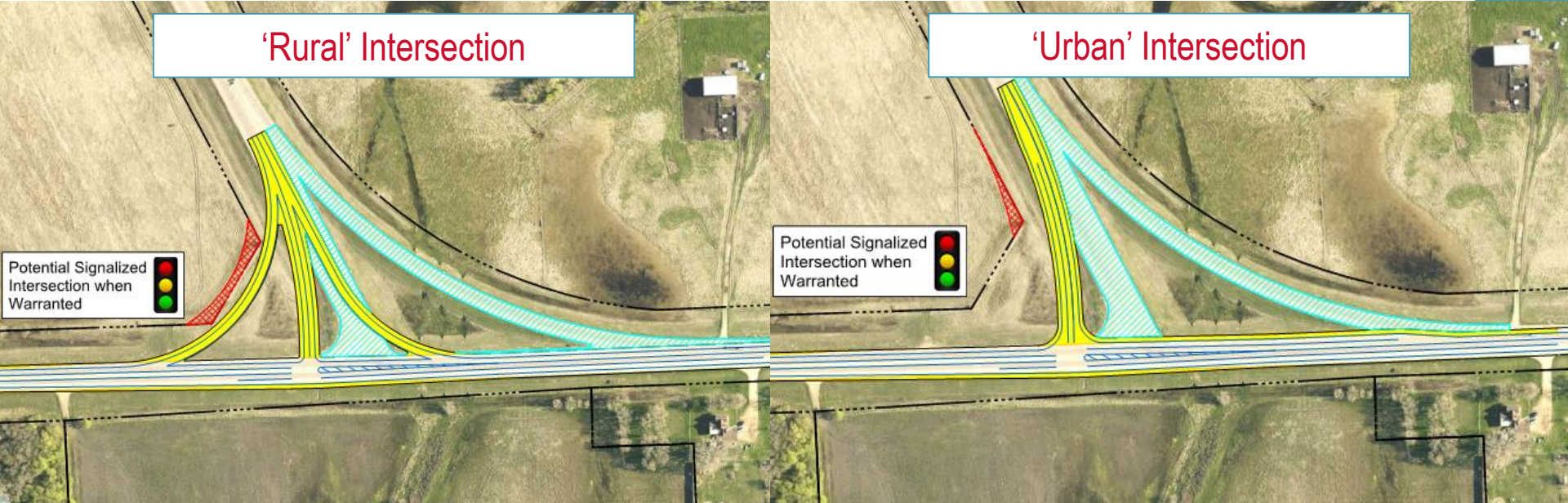
- Intersection angle
  - Eastbound to northbound turn
- Southbound to eastbound acceleration
- Increasing traffic volumes

## Concept Summary

- 'Rural' and 'urban' intersection concepts



# US14/US14 Bypass (east) Intersection Concepts



# US14 in Volga

## Needs to Address

- Future development and traffic growth
- Managing access
- Side-street approach widths
- Bicycle/pedestrian routes

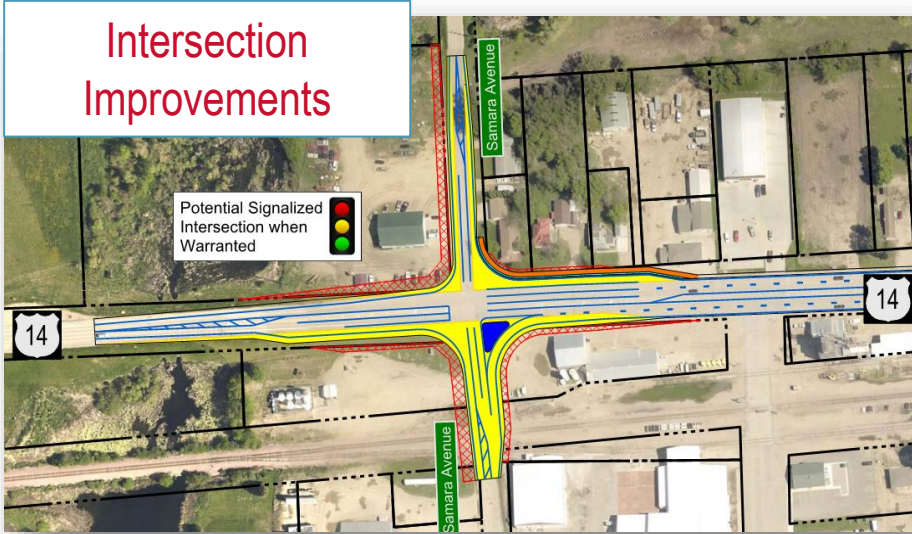
## Concept Summary

- Intersection improvement concepts
- Alternative access and bicycle/pedestrian facilities



# US14 in Volga – Samara Avenue Intersection Concepts

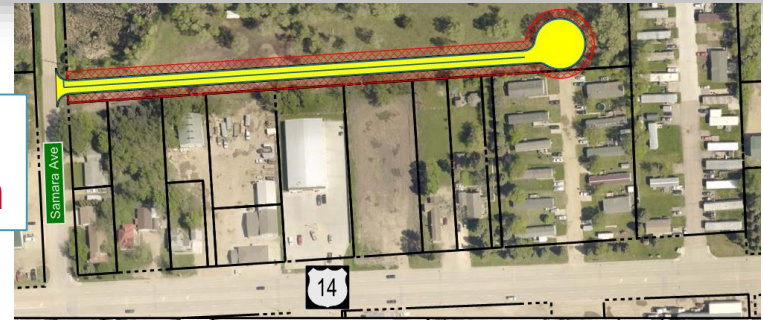
## Intersection Improvements



## Extend 5-Lane West + Intersection Improvements



## Samara Avenue Rearage Connection



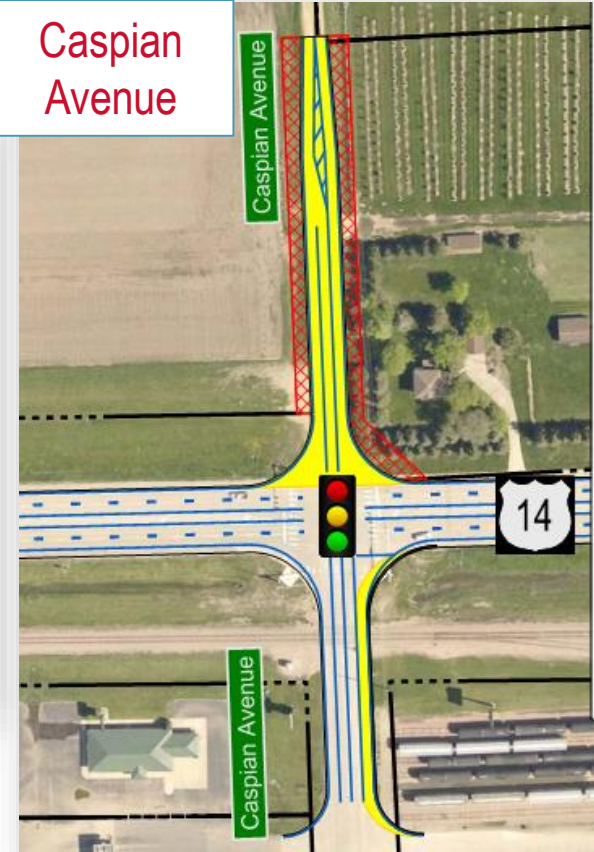
# US14 in Volga – Intersection Concepts

Hansina Avenue



- *Hansina Avenue identified as an important pedestrian crossing location.*

Caspian Avenue



# US14 West of Volga – Number of Lanes Analysis

## 2-lane highway plus intersection improvements

- Existing segment

## 2-lane highway with passing lanes ('Super 2')

- Heartland Expressway in NW Nebraska →

## Multi-lane highway (4-lane divided)

- Similar to other SD rural multi-lane highways



# Other Concepts – See Concept Boards

- Intersection turn lane improvements
  - 458<sup>th</sup> Avenue
  - 459<sup>th</sup> Avenue
  - 466<sup>th</sup> Avenue
- US14/US81 intersection
- ITS
  - Dynamic Message Signs
  - Cameras
  - Advance Warning for RR Crossing
- Pedestrian/Bicycle Routes
- Snow fence
  - Ex. 457<sup>th</sup> Avenue to 459<sup>th</sup> Avenue

# Next Steps...

- Compile feedback
- Refine concepts, identify 'feasible scenarios' (group concepts), and complete detailed analysis
- Present 'feasible scenarios' for public feedback – Spring 2020



# Thank You!

- Please provide feedback on corridor transportation needs
  - *Deadline: December 10, 2019*
- Study website: [www.US14-14Bcorridor.com](http://www.US14-14Bcorridor.com)
- Next Meeting: Spring 2020

## Study Contacts

Jon Wiegand

*Consultant (HDR) Project Manager*

605-782-8105

jonathan.wiegand@hdrinc.com

Steve Gramm

*SDDOT Project Manager*

605-773-6641

steve.gramm@state.sd.us



# US14-US14 Bypass

## CORRIDOR STUDY