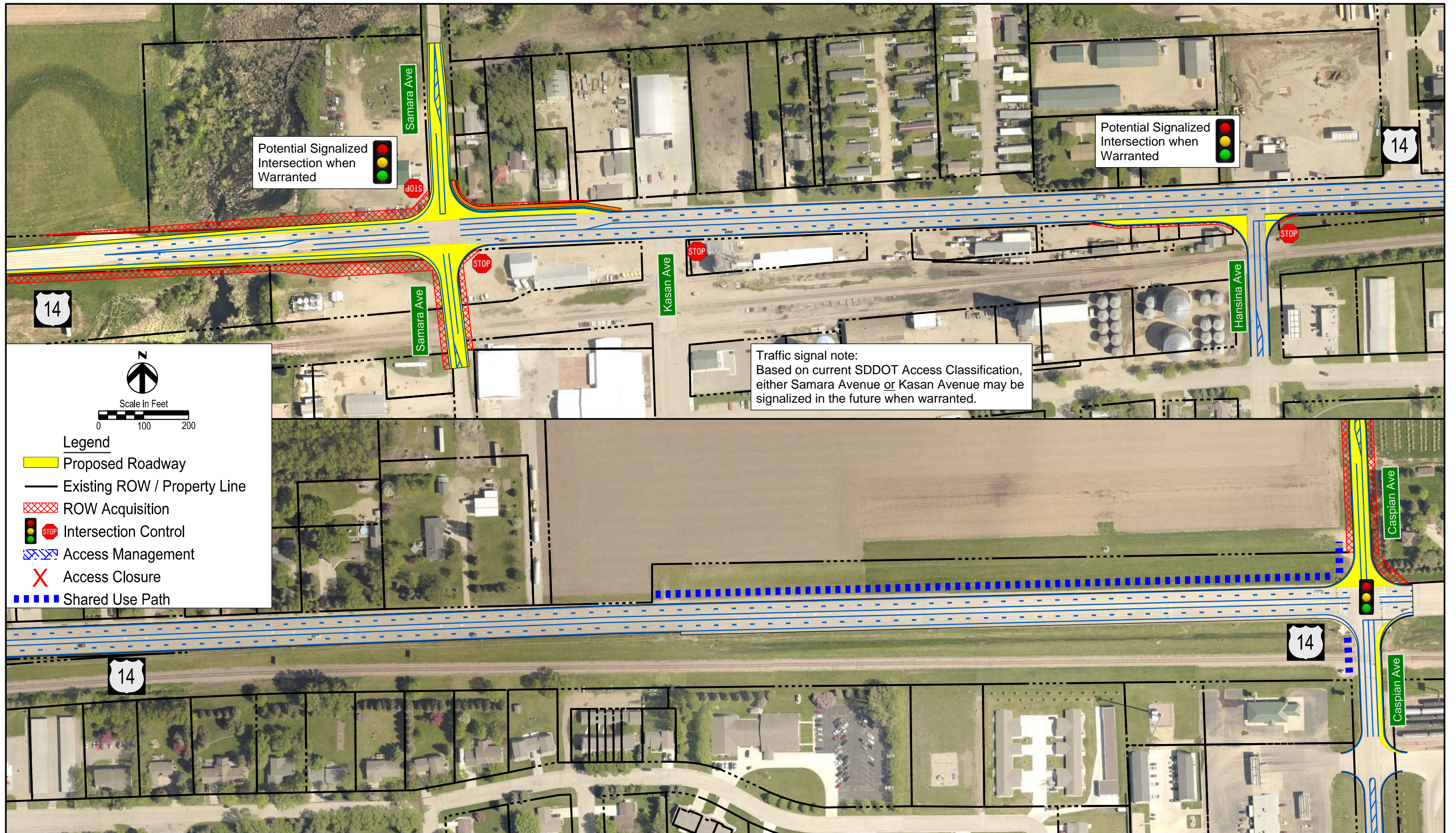


US14 in Volga

Scenario A: Existing 5-Lane with Intersection Improvements

Scenario includes:

- Samara Avenue intersection improvements
- Maintain existing configuration at Kasan Avenue
- Hansina Avenue eastbound right turn lane
- Caspian Avenue intersection improvements



Potential Signalized Intersection when Warranted



Potential Signalized Intersection when Warranted



Traffic signal note:
Based on current SDDOT Access Classification, either Samara Avenue or Kasan Avenue may be signalized in the future when warranted.

Scale in Feet
0 100 200

- Legend**
- Proposed Roadway
 - Existing ROW / Property Line
 - ROW Acquisition
 - STOP Intersection Control
 - Access Management
 - Access Closure
 - Shared Use Path



US14 in Volga Scenarios: Existing 5-Lane with Intersection Improvements

US14 / US14B Corridor Study

Brookings, SD

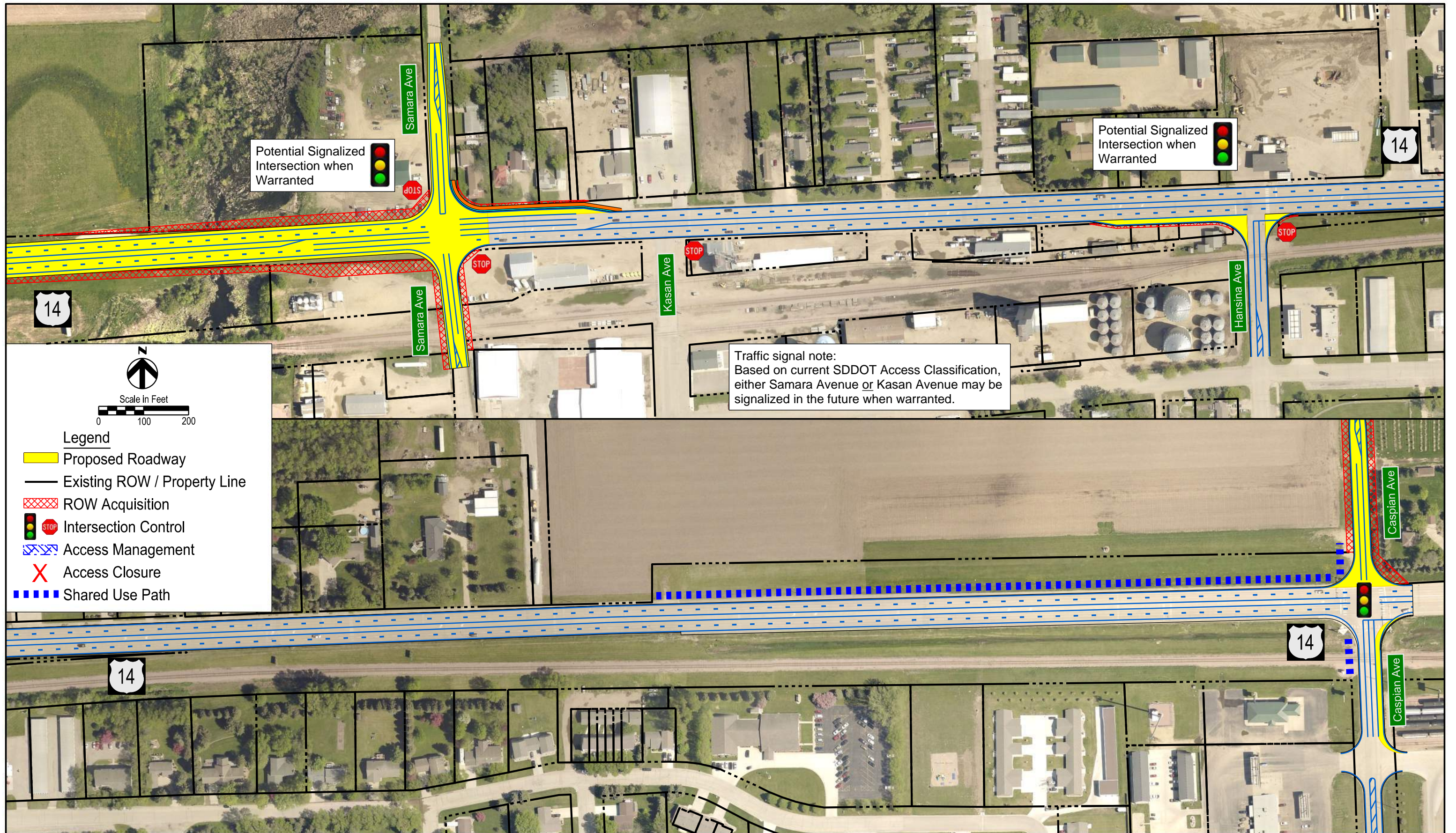
Figure
US14 in Volga Scenario A

US14 in Volga

Scenario B: Existing 5-Lane with Intersection Improvements

Scenario includes:

- Samara Avenue intersection improvements
 - Extend multilane highway west out of Volga
- Maintain existing configuration at Kasan Avenue
- Hansina Avenue eastbound right turn lane
- Caspian Avenue intersection improvements



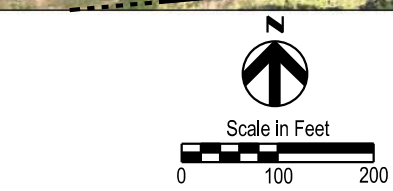
Potential Signalized Intersection when Warranted



Potential Signalized Intersection when Warranted



Traffic signal note:
Based on current SDDOT Access Classification, either Samara Avenue or Kasan Avenue may be signalized in the future when warranted.



- Legend**
- Proposed Roadway
 - Existing ROW / Property Line
 - ROW Acquisition
 - Intersection Control
 - Access Management
 - Access Closure
 - Shared Use Path

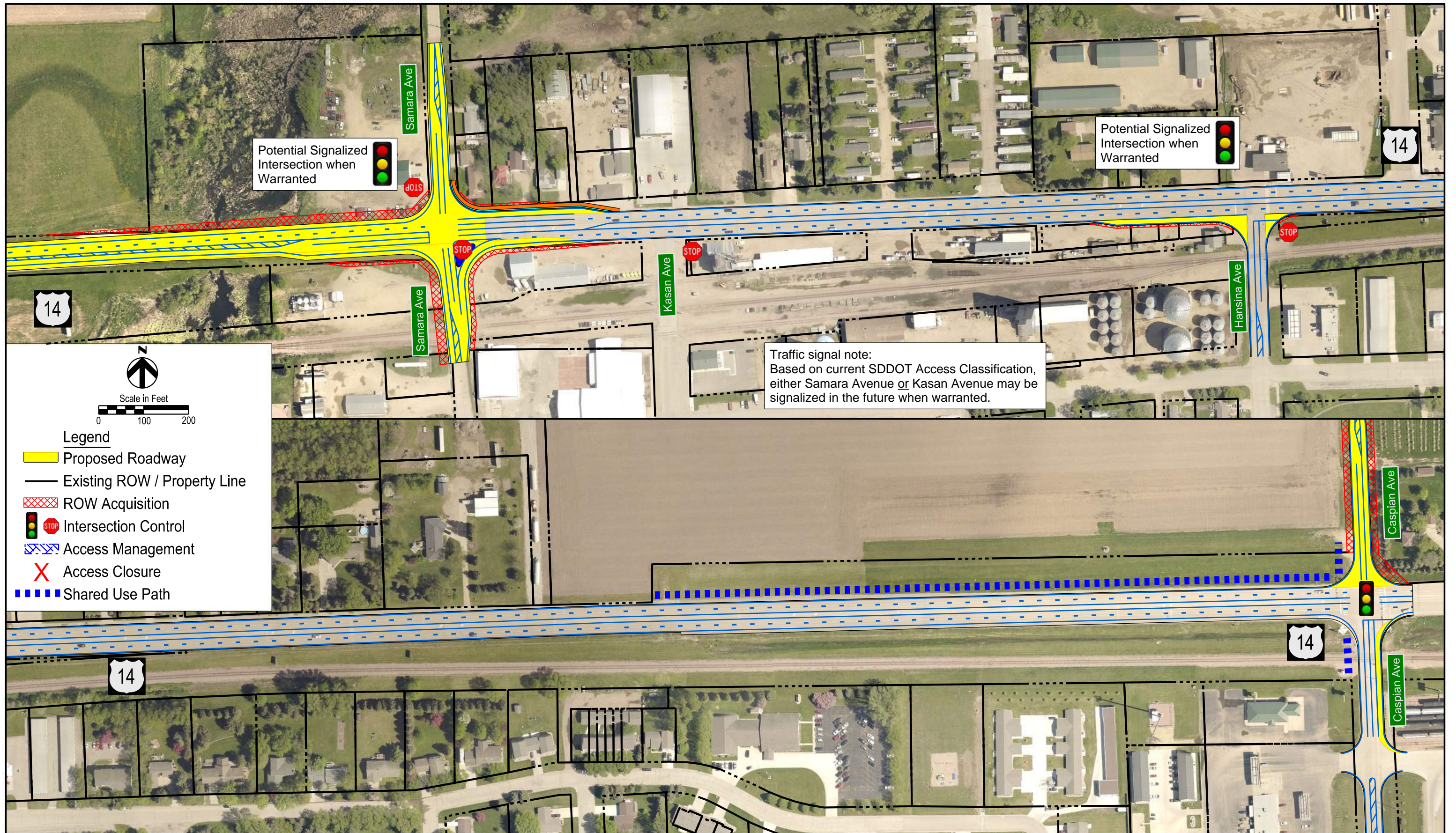


US14 in Volga

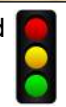
Scenario C: Existing 5-Lane with Intersection Improvements

Scenario includes:

- Samara Avenue intersection improvements
 - Extend two westbound lanes west out of Volga
 - Add eastbound turn lanes
- Maintain existing configuration at Kasan Avenue
- Hansina Avenue eastbound right turn lane
- Caspian Avenue intersection improvements



Potential Signalized Intersection when Warranted



Potential Signalized Intersection when Warranted



Traffic signal note:
Based on current SDDOT Access Classification, either Samara Avenue or Kasan Avenue may be signalized in the future when warranted.

Scale in Feet

0 100 200

Legend

- Proposed Roadway
- Existing ROW / Property Line
- ROW Acquisition
- STOP Intersection Control
- Access Management
- Access Closure
- Shared Use Path



US14 in Volga Scenarios

Improvement Scenarios

Scenario A: Existing 5-Lane with Intersection Improvements

Scenario B: Existing 5-Lane with Intersection Improvements (extend multilane west of Samara Avenue)

Scenario C: Existing 5-Lane with Intersection Improvements (extend two westbound lanes west of Samara Avenue)

Preliminary Summary Matrix

Scenario	2050 Traffic Operations				Predictive Safety		ROW & Costs		Environmental Resources
	Intersection Operations Improvement?	Stop-control Samara Ave Operations (LOS)*	US14 Corridor Operations (LOS)	Corridor Reliability & Driver Expectancy	F&I Crashes	Total Crashes	ROW Acquisition	Construction & ROW Costs	Potential Impacts
	Yes / No	AM / PM	AM / PM	5 - Best 3 - Middle 1 - Least	Average Annual # Crashes	Average Annual # Crashes	Acres	\$ mil	Low, Medium, High
Scenario A	Yes	A / B	C / B **	4	3.8	11.8	2	\$1.5	Low
Scenario B	Yes	A / B	C / B **	5	3.9	12.7	2.5	\$3.5	Low
Scenario C	Yes	A / B	C / B **	4	3.9	11.8	2	\$3.5	Low
No Build	No	E / F	LOS B or better	3	4.3	12.9	0	0	Low

* Samara Avenue intersection is the only one that changes between Build scenarios; Kasan Avenue, Hansina Avenue, and Caspian Avenue proposed improvements the same in all Build scenarios.

** LOS measure reflects signalized intersections at Samara Avenue, Hansina Avenue, and Caspian Avenue.